



## Release Notes

Product: TAB FusionRMS, All Editions

Release Date: February 01, 2022

Release Version 10.2.2460

### Version History

10.2.2460 Service Pack 5 February 01, 2022

10.2.2457 Service Pack 4 October 06, 2021

10.2.2439 Service Pack 3 March 12, 2021

10.2.2404 Service Pack 2 August 7, 2020

10.2.2397 Service Pack 1 May 8, 2020

10.2.2375 October 18, 2019

# Contents

---

<b>1. New Features in 10.2</b> .....	<b>1</b>
WebAccess Client .....	1
Technology .....	2
<b>2. Features in 10.2</b> .....	<b>3</b>
WebAccess Client .....	3
Full-text Search .....	4
Technology .....	4
TAB FusionRMS mobile application .....	4
Features and functions .....	4
Integration with Microsoft® SharePoint® .....	4
<b>3. Fixed Issues in 10.2.2460 (10.2 SP5)</b> .....	<b>5</b>
<b>4. Fixed Issues in 10.2.2457 (10.2 SP4)</b> .....	<b>6</b>
<b>5. Fixed Issues in 10.2.2439 (10.2 SP3)</b> .....	<b>7</b>
<b>6. Fixed Issues in 10.2.2404 (10.2 SP2)</b> .....	<b>8</b>
<b>7. Fixed Issues in 10.2.2397 (10.2 SP1)</b> .....	<b>9</b>
<b>8. Fixed Issues in 10.2.2375 (10.2)</b> .....	<b>10</b>
<b>9. Known Issues in 10.2</b> .....	<b>11</b>
WebAccess .....	11
Installation .....	11
System Configuration .....	12
Application Configuration/Administration .....	12
WebAccess .....	13
WebAccess TABQuik Color Label printing .....	13
WebAccess and Desktop import using Microsoft® Excel .xlsx files .....	13
<b>10. General Notes</b> .....	<b>14</b>
Installation .....	14
System Configuration .....	15
Application Configuration/Administration .....	15
WebAccess and Desktop .....	15
<b>11. Discontinued Items and Features</b> .....	<b>17</b>

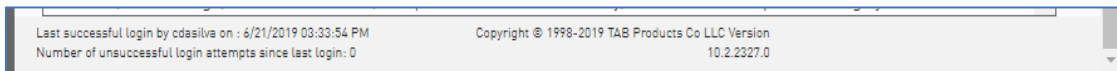
## RELEASE NOTES

# 1. New Features in 10.2

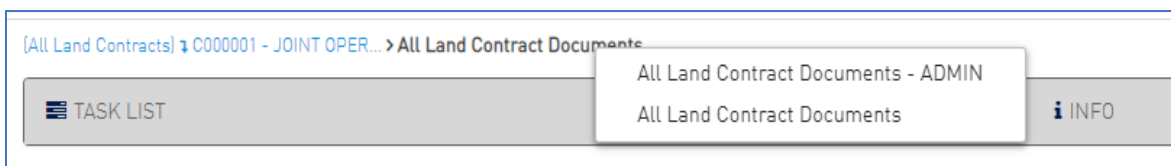
## WebAccess Client

The notes in this section relate to FusionRMS 10.2. FusionRMS 10.2 includes all features from previous releases. In version 10.2, the TAB FusionRMS WebAccess user interface provides all the same functionality you are used to (and a few new features) with a modern look and feel, with a renewed focus on usability. The major changes include:

- Single Sign On integration with Active Directory. Note, this feature is not available in Desktop.
- Redesigned and responsive browser/HTML attachment viewer for Google Chrome®, Apple Safari® and Microsoft Edge®
- Scan attachments directly to a record via TWAIN based scanners with Google Chrome® on Microsoft Windows. Note, this feature is not available for Apple Safari® or Microsoft Edge®
- Attachments cart with export and print capabilities for Google Chrome®, Apple Safari® and Microsoft Edge®
- Add, edit, delete attachment notes for Google Chrome®, Apple Safari® and Microsoft Edge®
- Global Search results display will display results for all views permitted by security instead of just the first one permitted
- Display previous failed login attempts for the current user after a successful login



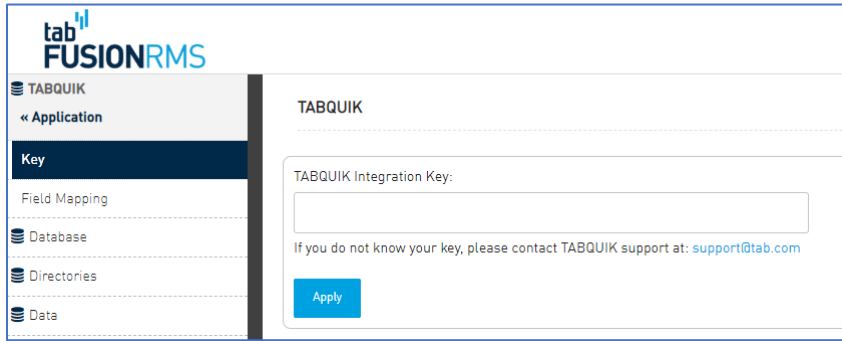
- Breadcrumbs displays all available views for easy switching



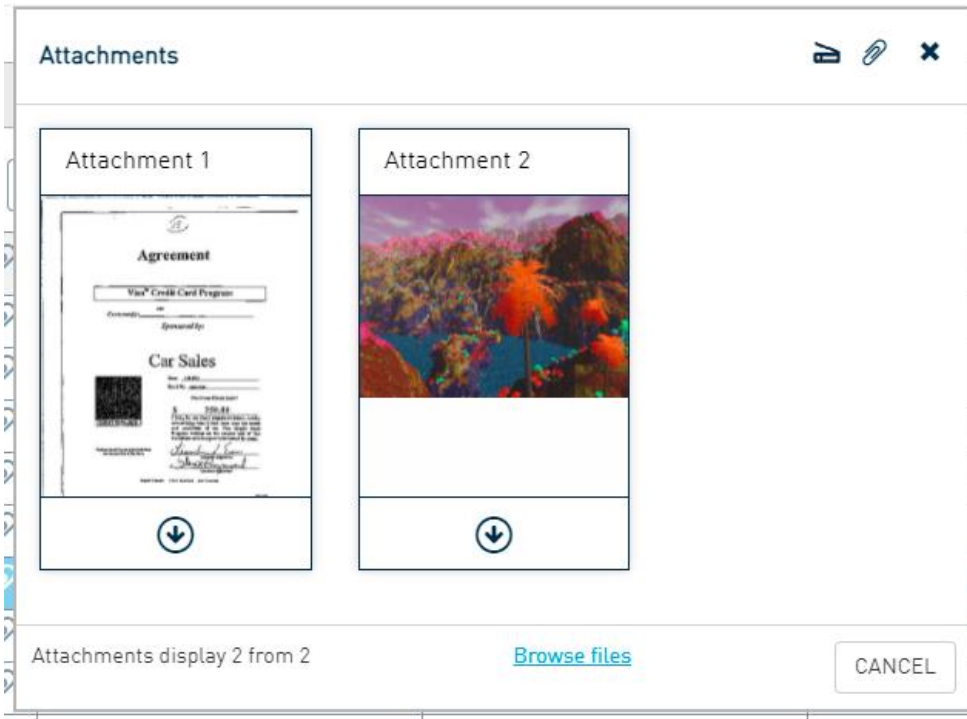
- My Favorite and My Queries are no longer shown to all users but rather controlled through security
- Breadcrumbs remember previous query criteria
- Additional Query window operators Not Like, Not Contains, Ends With
- Configurable warning and compliance banner when logging into WebAccess.
- Automatic deletion logic for completed background processing tasks.
- TABQuik integration key setup. Available via administration console.

### RELEASE NOTES

© 2022 TAB. All Rights Reserved  
 TAB Corporate Headquarters, 605 Fourth Street, Mayville, WI 53050



- TABQUIK integration field mapping. Available via administration console.
- Ability to drag and drop attachments onto Grid Level Attachment Viewer.
- Allow user to Scan attachments directly to a record via Grid Level Attachment Viewer.
- Ability to browse files directly to add an attachment from Grid Level Attachment Viewer.



## Technology

- FusionRMS 10.2 adds TLS 1.2 support for secure communication with Microsoft® SQLServer®

### RELEASE NOTES

© 2022 TAB. All Rights Reserved  
 TAB Corporate Headquarters, 605 Fourth Street, Mayville, WI 53050

## 2.Features in 10.2

---

### WebAccess Client

The major changes include:

- My Favorites, allows users to create multiple named lists of records that are stored per user on the FusionRMS server. My Favorites lists based on their related FusionRMS view, meaning they inherit the security and fields of the view. The list can only contain records of the underlying view. Users can add and remove records from the list and the contents of the list will not change unless security, retention, workflow, or other processes act on the record.
- My Query, allows users to create multiple named query criteria that are stored per user on the FusionRMS server. My Query is analogous to a saved search. My Query is based on their related FusionRMS view, meaning they inherit the security and fields of the view. Users can not or remove records from the results. The results displayed in My Query are dynamic and will change with security, retention, workflow, or other processes that act on the record.
- Background processing allows users to export or transfer a large set of records in the background. Previously these operations took a long time and did not allow the user to perform other operations. Background processing places the operation in a queue for processing and allows the user to continue with other activities. The lower and upper limits of Background Processing can be configured in the FusionRMS Settings table.
- Background Status, this new screen enables users to see the status of operations that have been placed on the Background Processing queue. The Background Status screen is also where users will retrieve the results of the operation, for example, result reports, exported content, etc.
- Audit reports similar in functionality to what is available in Desktop have been added to WebAccess.
- Record import feature in WebAccess now supports the placeholder tokens @@TIME, @@NOW, @@TODAY, @@SL\_UserName
- Clickable bread crumb navigation has been added above the main data grid. This feature enables easier navigation through the records hierarchy.
- Information menus, Tracking history, Retention information have been moved to the information menu for easier access.
- Multiple holds can be applied to a single record
- A modern look and feel with greater browser support, and more 'breadcrumbs' to help new users feel at home
- Multi-Language support with English and French out of the box
- Clearer navigation between Workspaces, with movable navigation panel on left
- Personalized date formats
- Landscape oriented screen layout for better usability
- Resizable and sortable columns for better usability
- Task Pane and tracking panels can be hidden to maximize screen real-estate, but yet these areas are a single click aware without being distracting
- Dropdown navigation to dependent information to maximize the productivity of the user interface
- Infinite scroll data grids for easier navigation and increased productivity

#### RELEASE NOTES

© 2022 TAB. All Rights Reserved  
 TAB Corporate Headquarters, 605 Fourth Street, Mayville, WI 53050

## Full-text Search

TAB FusionRMS full text utility will now extract embedded text from PDF files for searching, in addition to the previous Imaging-OCR technique.

## Technology

- With version 10.2, .Net 3.5 is no longer required for customers who are not using attachments
- TAB FusionRMS supports broader range of browsers including, Google Chrome®, Microsoft Edge® and Internet Explorer®, Apple Safari®. Allowing users to access their critical information from a broader array of devices.

## TAB FusionRMS mobile application

The mobile application allows you to access and manage your records and information anytime, anywhere. You can search for and review documents from your preferred mobile device.

## Features and functions

- Access FusionRMS on your Apple® iOS or Android device
- Connect securely to your FusionRMS database
- Navigate the document repository
- Search for documents based on metadata and document contents
- Retrieve database items based on barcode
- Read barcodes using your device's built-in camera
- Download attachments
- Request and transfer physical objects

## Integration with Microsoft® SharePoint®

TAB FusionRMS 10.2 can be integrated with Microsoft® SharePoint® to enable the following operations:

- Copy to FusionRMS enables a user to copy content from a Microsoft® SharePoint® document library to Fusion. Only the current version of the contact is copied, metadata is not copied. This feature requires the creation of indexing LinkScript in FusionRMS.
- Move to FusionRMS enables a user to move content from a Microsoft® SharePoint® document library to Fusion. The original content is deleted from Microsoft® SharePoint®. Only the current version of the contact is moved. This feature requires the creation of indexing LinkScript in FusionRMS
- Unified Search, enables users to search and find content residing in either FusionRMS or Microsoft® SharePoint®
- FusionRMS Webpart, allows users to access FusionRMS WebAccess from within the Microsoft® SharePoint user interface.

### RELEASE NOTES

© 2022 TAB. All Rights Reserved  
TAB Corporate Headquarters, 605 Fourth Street, Mayville, WI 53050

## 3. Fixed Issues in 10.2.2460 (10.2 SP5)

---

The notes in this section relate to the 10.2.2460 release. 10.2.2460 includes all fixes from previous releases.

- [FUS-10570] [WebAccess] Tracking Import always uses current date and time for transaction date; any date supplied in the import file is ignored.
- [FUS-10964] [WebAccess] When drilling down from parent to child, child rows are "reparented" when user modifies any column in the child row.
- [FUS-11003] [WebAccess] Query window of a child table allows parent criteria to be modified when drilling down from parent to child.

### RELEASE NOTES

© 2022 TAB. All Rights Reserved  
TAB Corporate Headquarters, 605 Fourth Street, Mayville, WI 53050

## 4. Fixed Issues in 10.2.2457 (10.2 SP4)

---

The notes in this section relate to the 10.2.2457 release. 10.2.2457 includes all fixes from previous releases.

- [FUS-10798] [WebAccess] When Web Access is installed in IIS 8.5 or lower, a viewstate error sometimes occurs when navigating through Views.
- [FUS-10494] [WebAccess] Users can check out Excel attachments that contain conditional formatting.
- [FUS-10493] [WebAccess] Red X attachment should be displayed in Document Viewer when file does not exist - console errors are logged.
- [FUS-10249] [Documentation] Update the release notes to state that Microsoft Access database 2010/2016 engine needs to be installed on desktop machines to import XLSX files.
- [FUS-10248] [WebAccess] Upgrade the jquery Library used by WebAccess help.
- [FUS-10245] [WebAccess] Web Access attachment popup window and viewer need to handle cases where the attachment flyout can not be rendered.
- [FUS-10235] [WebAccess] The attachment popup window does not display under certain circumstances.
- [FUS-9688] [Desktop] Add the Microsoft Visual C++ 2010 redistribution SP1 runtimes to the desktop installer.
- [FUS-9671] [WebAccess] When Max fetch records is > 100, rows with a parent Id > 100 can not be retrieved via WEB API URL.
- [FUS-7904] [WebAccess] Web Access does not add the default value when creating a bit field (Yes/No).
- [FUS-7173] [WebAccess] If a View does not have a sort order, exports/transfers via background processing throws an "Invalid Column name Id" error.
- [FUS-6739] [WebAccess] New directories cannot be added with \\IP address or \\ServerName paths from Web Access->Admin->Directories.
- [FUS-6737] [WebAccess] Users are shown an error screen when trying to download an attachment from Grid viewer with Red X.

### RELEASE NOTES

## 5. Fixed Issues in 10.2.2439 (10.2 SP3)

---

The notes in this section relate to the 10.2.2439 release. 10.2.2439 includes all fixes from previous releases.

- [FUS-6548] [WebAccess] Search results are not complete when using “Under this row” option in global search
- [FUS-7150] [WebAccess] Executing disposition from Web Access the following values are being updated correctly (Disposition Date, Approved By, Disposition Type)
- [FUS-7153] [WebAccess] Upon submitting the Records to Disposition - Only the selected records from the reports are set with the SLRetentionDispositionStatus in the DB on actual Table
- [FUS-7170] [WebAccess] Retention Report heading date displays the current date and not the date the report was generated
- [FUS-7195] [WebAccess] LinkScript prompt with a drop down can't be selected using Google Chrome or Microsoft Edge
- [FUS-7591] [WebAccess] Disposition action is not limited to only those records selected by the user in the Retention Report
- [FUS-7771] [WebAccess] If the primary key for a table is a text field, WebAccess does not allow the field to be edited
- [FUS-7783] [WebAccess] Retention Reports show disposition types when there are no records of that type in the report.
- [FUS-7843] [WebAccess] Records are not removed from the eligible for disposition report after a user edits the appropriate date event
- [FUS-7917] [WebAccess] Import into Favorites fails; nothing is imported and there are no messages when the index for the table the Favorite is based on is not an INT field
- [FUS-7919] [WebAccess] Delete a Record from a standard grid view is not removing the record from any favourite lists
- [FUS-7922] [WebAccess] Records are not removed from the eligible for disposition report, after Reassigning Retention Code from Retention Code Maintenance
- [FUS-8307] [WebAccess] Does not download all attachment pages if the attachment is built in Desktop from multiple files
- [FUS-8871] [WebAccess] Active Directory sync fails if there are special characters in any part of the Active Directory information, including CN, OU or user level
- [FUS-8873] [WebAccess] LinkScript engine in WebAccess does not update SLIndexer when the field is modified by the LinkScript.
- [FUS-8876] [WebAccess] Add capability of opening the attachment viewer from the grid popup window when there is no attachment for the record in the first place.
- [FUS-8883] [WebAccess] Global search very slow in specific circumstance
- [FUS-8892] [WebAccess] The original filename in the system table pcfpointers is not kept when a user adds an attachment through WebAccess.
- [FUS-9137] [WebAccess] The original filename in the system table imagepointers is not kept when a user adds an attachment through WebAccess.

### RELEASE NOTES

## 6.Fixed Issues in 10.2.2404 (10.2 SP2)

---

The notes in this section relate to the 10.2.2404 release. 10.2.2404 includes all fixes from previous releases.

- [FUS-6893] [WebAccess] Export All and Transfer All is not limited to the displayed records of a Global search if the user selects View All in the search results pane, instead it operates on the entire underlying data set.
- [FUS-6901] [WebAccess] If User enters today's date using the shortcut "t" in the form view date control, the value can not be changed to any other value after being edited.
- [FUS-6912] [WebAccess] Renaming attachments in document viewer will not work in certain Fusion configurations

### RELEASE NOTES

© 2022 TAB. All Rights Reserved  
TAB Corporate Headquarters, 605 Fourth Street, Mayville, WI 53050

## 7. Fixed Issues in 10.2.2397 (10.2 SP1)

---

The notes in this section relate to the 10.2.2397 release. 10.2.2397 includes all fixes from previous releases.

- [FUS-1773] [WebAccess/Desktop] Destroyed records must not be allowed to be placed on Hold.
- [FUS-2582] [Desktop] An error is displayed when user removes an existing hold followed by trying to add a new hold
- [FUS-545] [WebAccess/Desktop] Destroyed or Archived records must not be displayed in search results.
- [FUS-6603] [WebAccess] Drill Down to any child table and select Transfer All from the menu, all the records in the table will be transferred not just the records on display.
- [FUS-6608] [WebAccess] Admin -> Security does not accept email addresses with .ca domain name.
- [FUS-6621] [WebAccess] Error message is displayed when checking out a document that was previously added by desktop.
- [FUS-6641] [WebAccess/Desktop] Script window in Desktop 10.2 is not executing some commands.
- [FUS-6644] [WebAccess/Desktop] Eligible for disposition report must not display records that are on hold.
- [FUS-6702] [WebAccess/Desktop] Disposition date is not calculated correctly when Force to Year End is set. isn't reflecting on the Scheduled Retention Type Date in the Retention Information Pop up
- [FUS-6713] [WebAccess] Users are not able to view attachments if Fusion is configured with UNC paths instead of drive letters.
- [FUS-6743] [WebAccess] Drill Down to any child table and select Export All from the menu, all the records in the table will be exported not just the records on display.

### RELEASE NOTES

## 8. Fixed Issues in 10.2.2375 (10.2)

---

The notes in this section relate to the 10.2.2375 release. 10.2.2375 includes all fixes from previous releases.

- [FUS-2541] [FTSOOCR] Utility is crashing or hanging on specific files.
- [FUS-5051] [WebAccess] Display previous failed login attempts in the task panel.
- [FUS-5621] [SLIM] If Service Control Manager is enabled for multiple databases - Tasks are Added into "InQue" and are not started
- [FUS-5647] [WebAccess] Emailing All attachments from the attachment cart does not open up email application and doesn't render all attachment pdfs.
- [FUS-5719] [WebAccess/Desktop] Printing All Attachments in Desktop and IE does not print all the pages of the attachments
- [FUS-5739] [WebAccess] For empty favorite list, side panel form still displays record data.
- [FUS-5740] [WebAccess] Create a new memo field from WebAccess, user can't add that to a view without turning off sortable and filterable.
- [FUS-5754] [WebAccess] Global Search should display results for all views permitted by security.
- [FUS-5838] [WebAccess] Will not set default values configured for Yes/No fields when implemented through SQL Server.
- [FUS-5849] [WebAccess] Retention Information link moved to drill down menu.
- [FUS-5870] [WebAccess] Global Search results are not displayed if search term uses Double-quotes.
- [FUS-5886] [WebAccess] Previous Global Search terms are not cleared with every new session in IE and Chrome.
- [FUS-5887] [WebAccess] Pressing the Enter Key after entering a value into global search does not initiate the search.
- [FUS-6017] [WebAccess] Global Search results in error message when including attachments and under this row only option.

### RELEASE NOTES

## 9. Known Issues in 10.2

---

The notes in this section relate to the 10.2 release only and are not associated with any other version.

### WebAccess

- [FUS-10820] [Web Access] Conditional formatted Excel Attachment can't be previewed, User can still download the file
- [FUS-9689] [Web Access] SL Row Count entry for TaskList in the Admin -> Views Ignores the Filter condition applied on that View
- [FUS-2347] [Web Access] Implement annotation functionality in the HTML Viewer
- [FUS-1632] [Web Access] Multi level report functionality

### Installation

The notes in this area are related to all installations and are not dependent on version numbers. Installation notes can relate to the application, additional modules (such as Bar-code Tracking), SLIM Server, and Service Manager. Installation can occur on servers, administrator stations, and end-user desktops.

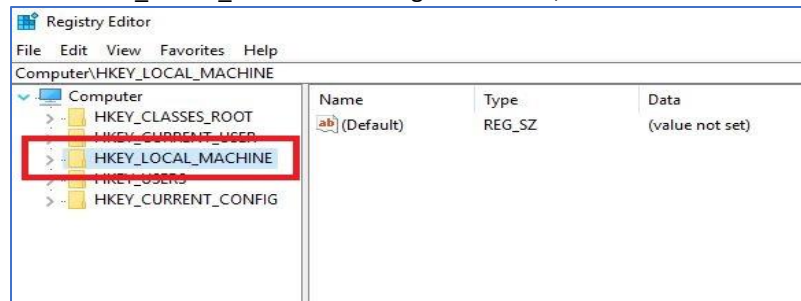
- FUS-2559 [Issue] The Datalogic Barcode reader is not recognized when connected to Windows 10. Take the following steps to follow are:
  - Ensure .net 3.5 is installed on the computer
  - Download and install the corresponding 32 or 64 bit version of WMDC from <https://support.microsoft.com/en-ca/help/931937/description-of-windows-mobile-device-center>
  - Create a windows bat file with the following commands and execute the bat file as Windows Local Administrator :
 

```
@Echo off
echo Changing Registry Settings...
REG ADD HKLM\SYSTEM\CurrentControlSet\Services\RapiMgr /v SvcHostSplitDisable /t REG_DWORD /d 1 /f
REG ADD HKLM\SYSTEM\CurrentControlSet\Services\WcesComm /v SvcHostSplitDisable /t REG_DWORD /d 1 /f
echo Done!
echo Changing services...
sc config "WcesComm" obj= LocalSystem start= auto
sc config "RapiMgr" obj= LocalSystem start= auto
echo Done! Please restart your computer after this prompt closes.
Pause
```
  - Restart the computer
- If the attachment viewer in Internet Explorer continues to ask to be installed after multiple attempts.
  - Ensure the user executing the installation is an administrator on the local machine with the permission to install software.

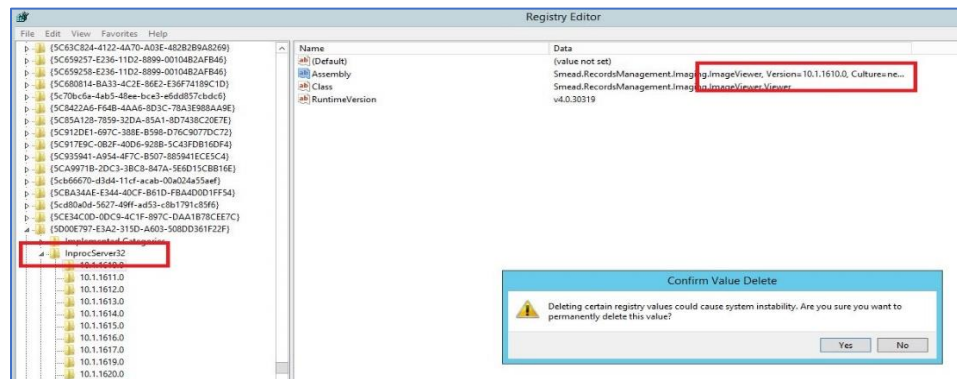
#### RELEASE NOTES

© 2022 TAB. All Rights Reserved  
 TAB Corporate Headquarters, 605 Fourth Street, Mayville, WI 53050

- Under some circumstances the windows registry requires editing.
  - Navigate to Start menu and type "RegEdit" in search bar (regedit.exe) then click Enter.
  - Select HKEY\_LOCAL\_MACHINE and Right click on it, select Find.



- In Find What: Textbox enter "ImageViewer" and click Enter.
- Look for the keys with Smead.RecordManagement.ImagingViewer by hitting F3 each time which choose 'Find Next'
- Delete all keys with any version number other than Smead.RecordsManagement.Imaging.ImageViewer,Version="10.2.2375"
- While deleting keys check the "InprocServer32" Keys for entries with previous version numbers and delete those keys other than version "10.2.2375".



## System Configuration

The notes in this area are related the system configuration of the application prior to any application configuration. System Configuration notes can relate to SLIM Manager, user seats, upgrade utilities, licensing, and Active Directory. Setup procedures usually occur before the application has been opened for the first time.

- None at this time.

## Application Configuration/Administration

The notes in this area are related to configuring and customizing the application. Application Configuration/Administration notes can relate to items in the Admin Manager, including security, database map, table properties, view setup and customizing, and report setup and customizing.

- None at this time.

### RELEASE NOTES

## WebAccess

The notes in this area are related to end-user functionality and procedures. End user notes may include general application usage, attachments, reports, check in/check out, orphan attachments, bar code tracking, and printing.

- **FUS-6508 [Issue]:** Attachment Cart in Microsoft Edge® does not support more than 20 attachments in the cart.
- **Annotations and Redactions:** Attachments with annotations or redactions can not be viewed using Google Chrome®, Apple Safari® or Microsoft Edge®. Annotations and redactions can only be viewed from using Microsoft® Internet Explorer®.

## WebAccess TABQuik Color Label printing

The following special characters are supported when printed from WebAccess using TABQuik:

` ~ ! @ # \$ % ^ & \* ( ) \_ + - = { } | \ [ ] : " ; < > / , . ?

The following special characters **are not** supported when printed from WebAccess using TABQuik:

' (Single Quote)

Examples of the above are : `text, `tabquik

## WebAccess and Desktop import using Microsoft® Excel .xlsx files

FusionRMS WebAccess requires Microsoft Access Database Engine 2010/2016 Redistributable to be installed on the WebAccess Server to support importing records in batch mode using Microsoft® Excel® .xlsx files.

FusionRMS Desktop requires Microsoft Access Database Engine 2010/2016 Redistributable to be installed on all machines that will be used to import records in batch mode using Microsoft® Excel® .xlsx files.

The redistributable can be downloaded from <https://www.microsoft.com/en-us/download/details.aspx?id=54920> . Please follow the instructions as provided by Microsoft to install this component.

### RELEASE NOTES

## 10. General Notes

---

The notes in this section relate to the general TAB FusionRMS 10.2 release and are not associated with any specific versions.

### Installation

The notes in this section relate to all installations and are not dependent on version numbers. Installation notes can relate to the application, additional modules (such as Bar-code Tracking), SLIM Server, and Service Manager. Installation can occur on servers, administrator stations, and end-user desktops.

- WebAccess, black and white label printing requires the “Microsoft® Print to PDF” or Win2PDF or Win2PDF TSE. Win2PDF or Win2PDF TSE are third party printer drivers for creating PDF files and not included in TAB FusionRMS. Win2PDF or Win2PDF TSE must be purchased separately.
- Microsoft® Windows® still displays old icon for FusionRMS Desktop after upgrading to FusionRMS 10.2 . Correcting this issue requires clearing the icon cache:

- Create a windows bat file with the following commands and execute the bat file as Windows Local Administrator:

```

:: Created by: Shawn Brink
:: http://www.sevenforums.com
:: Tutorial: http://www.sevenforums.com/tutorials/49819-icon-cache-rebuild.html
@echo off
set iconcache=%localappdata%\IconCache.db

```

```

echo The Explorer process must be killed to delete the Icon DB.

```

```

echo.

```

```

echo Please SAVE ALL OPEN WORK before continuing.

```

```

echo.

```

```

pause

```

```

echo.

```

```

If exist "%iconcache%" goto delID

```

```

If exist "%localappdata%\Microsoft\Windows\Explorer\iconcache*" goto delID

```

```

echo.

```

```

echo Icon DB has already been deleted.

```

```

echo.

```

```

pause

```

```

exit /B

```

```

:delID

```

```

echo Attempting to delete Icon DB...

```

```

echo.

```

```

ie4unit.exe -ClearIconCache

```

```

taskkill /IM explorer.exe /F

```

#### RELEASE NOTES

© 2022 TAB. All Rights Reserved  
 TAB Corporate Headquarters, 605 Fourth Street, Mayville, WI 53050

```

If exist "%iconcache%" del "%iconcache%" /A
If exist "%localappdata%\Microsoft\Windows\Explorer\iconcache*" del
"%localappdata%\Microsoft\Windows\Explorer\iconcache*" /A
echo.
echo Icon DB has been successfully deleted. If your cache is still wrong, please "restart
your PC".
echo.
start explorer.exe
pause
exit /B

```

## System Configuration

The notes in this section relate to the system configuration of the application prior to any application configuration. System Configuration notes can relate to SLIM Manager, user seats, upgrade utilities, licensing, and Active Directory. Setup procedures usually occur before the application has been opened for the first time.

## Application Configuration/Administration

The notes in this section relate to configuring and customizing the application. Application Configuration/Administration notes can relate to items in the Admin Manager, including security, database map, table properties, view setup and customizing, and report setup and customizing.

- **Google Chrome TWAIN Scanning:** Scan attachments directly to a record via TWAIN based scanners is only supported with Google Chrome® on Microsoft Windows®. This feature is not available for Apple Safari® or Microsoft Edge®
- **Auto Counters:** Whenever possible, it is best to use an Auto Counter ID field when creating tables in TAB FusionRMS. If field editing is required, an alternate (unique) field can be added and used for Bar Code Tracking and search functionality.

## WebAccess and Desktop

The notes in this section relate specifically to end-user functionality and procedures. End user notes may include general application usage, attachments, reports, check in/check out, orphan attachments, bar code tracking, and printing.

- **Adding Attachments (Desktop and Microsoft® Internet Explorer®):** Empty files, such as a TXT file with no characters, cannot be attached to a record. Users will be reminded of this if an attempt is made. (No Error shown in WebAccess Currently - Chrome)
- **Passwords:** Passwords are case-sensitive. Users of previous versions with converted databases will need to enter their passwords with this in mind. If users do not remember the case-sensitive version of their passwords, a member of a group with the Security Users or Security Configuration permission will have to re-set the password by entering a new password and setting it. After a new password is set, it is then recommended that the Password Change Required checkbox be selected so that the user will have to create a new password during the next log in.
- **Check in/Check out:** The Check in/Check out process is user/machine-based. During the check-out process, temporary files are copied to the local computer. If the same user logs onto a second computer and attempts to view the same attachment, the application will implicitly perform an undo check out because the temporary file does not exist on the second computer. The recommendation is that users

### RELEASE NOTES

© 2022 TAB. All Rights Reserved  
 TAB Corporate Headquarters, 605 Fourth Street, Mayville, WI 53050

should check out the attachment, perform the necessary work, and then check in the attachment. Users should not leave an attachment in a checked-out state and then attempt to manipulate that attachment from a second computer.

- **Adding Pages to Word Document Attachment (Desktop and Microsoft® Internet Explorer®):** Open the attachment in the attachment viewer. Check out the attachment, using either the file menu or the lock icon on the toolbar. Open the attachment in its native application by clicking on the document icon on the far-right side of the toolbar. Add the new pages. Save. Check in the attachment, using either the file menu or the unlock icon on the toolbar.
- **Publishing Images with FusionRMS Snapshot (Desktop):** Redactions are published. Annotations are not published.
- **Multi-page attachments (Desktop and Microsoft® Internet Explorer®):** Multi-page attachments with several hundred or thousands of pages will take an extremely long time to display in TAB FusionRMS. It's recommended that the attachment be segmented into multiple attachments then indexed.

## RELEASE NOTES

## 11. Discontinued Items and Features

---

- **Access databases:** TAB FusionRMS supports SQL databases only. Access databases can be converted to SQL with the conversion utility.
- **SL Compact and Repair utility:** This utility no longer ships with TAB FusionRMS since Access databases are no longer supported.
- **Delete All Children:** In previous versions, a security setting called 'Delete All Children' could be used to grant access to this functionality when deleting a record and its related children. This permission is now handled with the 'Delete' permission at the Tables level of Securables and Permissions.
- **Databases available at login:** In the Slim Manager of previous releases, users could specify which databases would be available on the login screen for select Active Directory groups. In 10.2, all connected databases will appear on the list.
- **Allow requests:** In previous versions, the *Allow Requests* checkbox in the Admin Manager > Application > Requestor, enabled the request functionality for the system. This is now handled at the table level. Each table contains an *Allow Requests* checkbox.
- **Options:** In order to preserve security integrity and avoid an authorized user from viewing a network user name, the *Set Network Name as User Name* option has been removed from the General tab on the Options screen.
- **Filter Orphans:** The Filter Orphans option has been removed from the Orphan Viewer.
- **Barcode Tracking Component:** Additional Component which is installed with older version of FusionRMS.

### RELEASE NOTES