



Release Notes

Product: TAB FusionRMS, All Editions

Release Date: October 20, 2023

Release Version 11.0.3143 Service Pack 2 Patch04

Version History

11.0.3143 Service Pack 2 Patch04 – October 20, 2023

11.0.3143 Service Pack 2 Patch03- September 19, 2023

11.0.3143 Service Pack 2 Patch01&Patch02- August 16, 2023

11.0.3143 Service Pack 2 - May 19, 2023

11.0.3142 Service Pack 1 - January 17, 2023

11.0.3126 - August 19, 2022

Contents

- 1. New Features in 11.0 1**
 - WebAccess Client 1
 - General Functionality 1
 - Standard Reporting 2
 - Dashboard Reporting 2
 - Document Vault 2
 - Security and Permissions 3
 - TAB FusionRMS Mobile Application 3
 - Integration with Microsoft® SharePoint® 4
- 2. Issues Fixed 5**
 - Issues fixed in 11.0.3143 Service Pack 2 Patch01 5
 - Issues fixed in 11.0.3143 Service Pack 2 Patch02 5
 - Issues fixed in 11.0.3143 Service Pack 2 Patch03 5
 - Issues fixed in 11.0.3143 Service Pack 2 Patch04 5
- 3. Known Issues 6**
 - Known Issues in 11.0 6
 - Installation 6
 - System Configuration 7
 - Application Configuration/Administration 7
 - WebAccess Client 8
 - WebAccess TABQuik Color Label Printing 8
 - WebAccess and Desktop Import using Microsoft® Excel .xlsx Files 8
- 4. Discontinued Items and Features 9**
 - WebAccess Client 9
 - Third-Party Tools & Integrations 9

RELEASE NOTES



1. New Features in 11.0

The notes in this section relate to FusionRMS 11.0. FusionRMS 11.0 includes all features from previous releases, unless otherwise noted within [Discontinued Items and Features](#).

WebAccess Client

In version 11.0, the TAB FusionRMS WebAccess user interface provides all the same functionality you are used to, in addition to several exciting new capabilities and a continued focus on usability, performance and efficiency. The major changes include:

General Functionality

- Drastically improved application responsiveness and performance, enabling users to easily return and work with larger data sets.
- Fully editable grid for user-friendly and efficient data edits and updates.
 - Support for keyboard shortcuts, including:
 - Copy (Ctrl+C)
 - Paste (Ctrl+V)
 - Undo (Ctrl+Z)
 - Redo (Ctrl+Y)
 - Select All (Ctrl+A)
 - Select Row (Ctrl)
 - Select Row Range (Shift)
 - Drag and drop columns to temporarily alter the column order of the view.
 - Temporarily sort data (ascending or descending) within the grid page.
 - Improved user feedback and error reporting when adding and editing data.
 - Introduction of a new calendar tooltip.
 - Introduction of the Autosave user-defined toggle.
 - When disabled (default setting), user is presented with a friendly confirmation prompt for the edit. User may confirm the edit or revert the change.
 - When enabled, the user edit is submitted immediately, and the associated confirmation is presented.
- Introduction of paging for the data grid, replacing the infinite scroll approach, and enabling more efficient user navigation through application views and data sets.
- Introduction of a new form window for adding new records to the grid, including enhanced performance, input prompts/masks and validation.
- When printing labels (TABQuik or Black & White), labels are now printed in the current sort order of the view, as selected by the user.
- When printing TABQuik labels, the TABQuik window now opens in a new tab, allowing the user to complete the print activity without losing their place within the application navigation.
- Delete My Queries and My Favorites directly from the navigation pane.

RELEASE NOTES

Standard Reporting

- The Reports module has been moved from the left-hand navigation pane to the module links found across the top of the application interface.
- The Reports module now opens in a new tab, allowing the user to continue working within the data grid area of FusionRMS concurrently to reporting.
- Introduction of new grid technology to reports, enhancing performance and usability.
 - Drag and drop columns to temporarily alter the column order of the report.
 - Temporarily sort data (ascending or descending) within the report.
- Breadcrumb navigation has now been extended to standard reports (such as Tracking History or Audit History).
- Capability to export the current page of any report to a CSV file.

Dashboard Reporting

- Introduction of a new dynamic analytics and metric reporting module, supporting the following:
 - Ability to create, access and manage user-defined dashboards directly within FusionRMS. Users can:
 - Create a new Dashboard
 - Delete an existing Dashboard
 - Rename an existing Dashboard
 - Clone an existing Dashboard
 - Quickly and easily add Widgets to a Dashboard, dynamically reporting on data within the FusionRMS solution. Select from any of the following built-in Widgets:
 - Bar Chart
 - Pie Chart
 - Data Grid
 - Bar Chart Objects Tracked By Time Period
 - Bar Chart Objects User Operations By Time Period
 - Bar Chart Time Series
 - Modify the selection details and criteria of an existing Widget at any time.
 - Intuitively and easily modify the Dashboard layout, reordering and/or resizing Widgets through drag and drop capabilities.

Document Vault

- Introduction of a new electronic records storage area (the Vault) with the following features:
 - Quickly and easily upload electronic content to the Vault without the requirement of attaching the file to a data grid row. Upload files through:
 - Drag & Drop
 - Browse to File
 - View Vault contents in your preferred interface:
 - Gallery view (thumbnail previews)
 - List view (filenames and metadata)

RELEASE NOTES

- Find content in the Vault using the Search feature.
- Download copies of content in the Vault.
- Delete content from the Vault.
- Utilize the Attach From Vault workflow to move and index content from the Vault to structured, data grid area(s) within the solution, enabling features such as:
 - Versioning
 - Retention

Security and Permissions

- Introduction of integration with Microsoft® Azure® for user management and authentication. Note that support for this integration is restricted to the WebAccess client (no desktop support).
 - Enable and administer the integration through the Admin Manager of the WebAccess client.
 - Create user groups and assign the desired group permissions and access within FusionRMS.
 - Complete Azure AD to FusionRMS group mappings, synchronizing users from Azure to FusionRMS.
 - Authentication against Azure AD during user login activity to FusionRMS.
 - Support for Azure AD Multi-Factor Authentication (MFA).
- Transfer/Request/Move features from the grid have been enhanced to align with view level security permissions. When using these features from the grid, users may only view and select data from views in which they have view permission.

TAB FusionRMS Mobile Application

The mobile application allows you to access and manage your records and information anytime, anywhere. You can search for and review documents from your preferred mobile device.

Features and Functions

- Access FusionRMS on your Apple® iOS or Android device.
- Connect securely to your FusionRMS database.
- Navigate the document repository.
- Search for documents based on metadata and document contents.
- Retrieve database items based on barcode.
- Read barcodes using your device's built-in camera.
- Download attachments.
- Request and transfer physical objects.
- [NEW] Capture and upload attachments directly to the Vault using your device's built-in camera.
- [NEW] Support for Microsoft® Azure® for user authentication, including Azure AD Multi-Factor Authentication (MFA).

RELEASE NOTES

© 2023 TAB. All Rights Reserved
 TAB Corporate Headquarters, 605 Fourth Street, Mayville, WI 53050

Integration with Microsoft® SharePoint®

TAB FusionRMS 11.0 can be integrated with Microsoft® SharePoint® to enable the following operations:

- Copy to FusionRMS enables a user to copy content from a Microsoft® SharePoint® document library to Fusion. Only the current version of the contact is copied, metadata is not copied. This feature requires the creation of indexing LinkScript in FusionRMS.
- Move to FusionRMS enables a user to move content from a Microsoft® SharePoint® document library to Fusion. The original content is deleted from Microsoft® SharePoint®. Only the current version of the contact is moved. This feature requires the creation of indexing LinkScript in FusionRMS.
- Unified Search enables users to search and find content residing in either FusionRMS or Microsoft® SharePoint®.
- FusionRMS Webpart allows users to access FusionRMS WebAccess from within the Microsoft® SharePoint user interface.

RELEASE NOTES

© 2023 TAB. All Rights Reserved
TAB Corporate Headquarters, 605 Fourth Street, Mayville, WI 53050

2. Issues Fixed

Issues fixed in 11.0.3143 Service Pack 2 Patch01

The notes in this section relate to the 11.0.3143 Service Pack2 Patch01 release specifically. Additionally, FusionRMS 11.0.3143 Patch01 includes all fixes from previous releases.

- [FUS-13095] Date field defaults to 1/1/1900 when user removes existing value in date field.
- [FUS-12890] Tracking Information not displayed in the View panel if Unique Key is not of Int type.

Issues fixed in 11.0.3143 Service Pack 2 Patch02

The notes in this section relate to the 11.0.3143 Service Pack2 Patch02 release specifically.

- [FUS-13216] Dropdown field text value in the View is splitting into multiple lines due to comma character.

Issues fixed in 11.0.3143 Service Pack 2 Patch03

The notes in this section relate to the 11.0.3143 Service Pack2 Patch03 release specifically.

- [FUS-13152] Entity Framework query all records from DB causing memory leak
- [FUS-13157] Update process goes into a loop ending up updating all records in a table if Parent Record value contains trailing spaces.

Issues fixed in 11.0.3143 Service Pack 2 Patch04

The notes in this section relate to the 11.0.3143 Service Pack2 Patch04 release specifically.

- [FUS-13174] Hold status of record resets after updating Retention EventType Date value
- [FUS-13157] User cannot pick future years from the Year dropdown in the date picker

RELEASE NOTES

3. Known Issues

Known Issues in 11.0

The notes in this area are related to all installations and are not dependent on specific FusionRMS 11.0 minor version numbers. The intention of this area is to shed light on questions or scenarios commonly encountered while installing and/or administering the FusionRMS solution. Please note that this area is not fully inclusive of all the known issues in FusionRMS. In case you have any questions, please visit [FusionRMS Guide Support Portal](#) where further information can be found, and inquiries can be easily submitted to TAB for assistance.

Installation

Installation notes can relate to the application, additional modules (such as Bar-code Tracking), SLIM Server, and Service Manager. Installation activities may occur on servers, administrator stations, and end-user desktops.

- FUS-2559 [Issue] The Datalogic Barcode Memor X3 reader is not recognized when connected to Windows 10. Take the following steps to resolve the issue.
 - Ensure .net 3.5 is installed on the computer.
 - Download and install the corresponding 32- or 64-bit version of WMDC from <https://support.microsoft.com/en-ca/help/931937/description-of-windows-mobile-device-center>.
 - Create a windows bat file with the following commands and execute the bat file as Windows Local Administrator:


```
@Echo off
echo Changing Registry Settings...

REG ADD HKLM\SYSTEM\CurrentControlSet\Services\RapiMgr /v SvcHostSplitDisable /t REG_DWORD /d 1 /f

REG ADD HKLM\SYSTEM\CurrentControlSet\Services\WcesComm /v SvcHostSplitDisable /t REG_DWORD /d 1 /f

echo Done!

echo Changing services...

sc config "WcesComm" obj= LocalSystem start= auto
sc config "RapiMgr" obj= LocalSystem start= auto

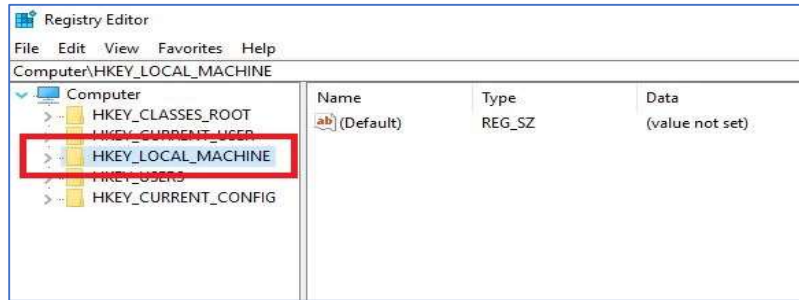
echo Done! Please restart your computer after this prompt closes.

Pause
```
 - Restart the computer.
- If the attachment viewer in Internet Explorer continues to ask to be installed after multiple attempts.
 - Ensure the user executing the installation is an administrator on the local machine with the permission to install software.
 - Under some circumstances the windows registry requires editing.
 - Navigate to Start menu and type "RegEdit" in search bar (regedit.exe) then click Enter.

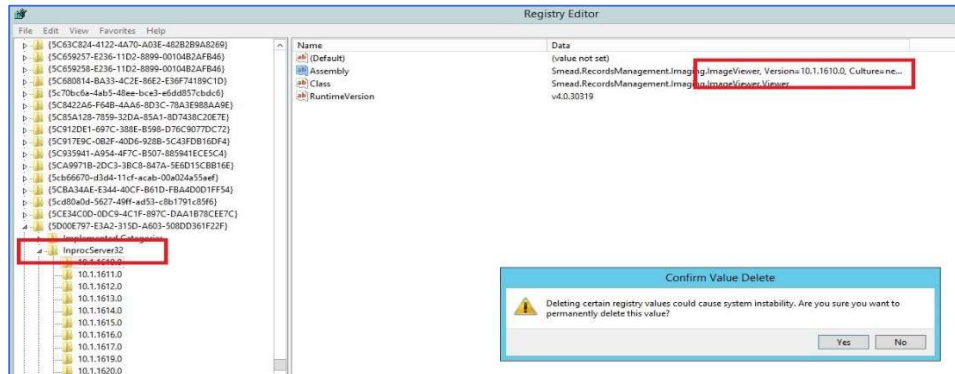
RELEASE NOTES

© 2023 TAB. All Rights Reserved
 TAB Corporate Headquarters, 605 Fourth Street, Mayville, WI 53050

- Select HKEY_LOCAL_MACHINE and Right click on it, select Find.



- In Find What: Textbox enter "ImageViewer" and click Enter.
- Look for the keys with Smead.RecordManagement.ImagingViewer by hitting F3 each time which choose 'Find Next'.
- Delete all keys with any version number other than Smead.RecordsManagement.Imaging.ImageViewer,Version="11.0.3126".
- While deleting keys check the "InprocServer32" Keys for entries with previous version numbers and delete those keys other than version "11.0.3126".



System Configuration

The notes in this area are related the system configuration of the application prior to any application configuration. System Configuration notes can relate to SLIM Manager, user seats, upgrade utilities, licensing, and Active Directory.

- None at this time.

Application Configuration/Administration

The notes in this area are related to configuring and customizing the application. Application Configuration/Administration notes can relate to items in the Admin Manager, including security, database map, table properties, view setup and customizing, and report setup and customizing.

- None at this time.

RELEASE NOTES

WebAccess Client

The notes in this area are related to end-user functionality and procedures. End user notes may include general application usage, attachments, reports, check in/check out, orphan attachments, bar code tracking, and printing.

- **Annotations and Redactions:** Attachments with annotations or redactions can not be viewed using Google Chrome®, Apple Safari® or Microsoft Edge®. Annotations and redactions can only be viewed from using Microsoft® Internet Explorer®.

WebAccess TABQuik Color Label Printing

The following special characters are supported when printed from WebAccess using TABQuik:

` ! @ # \$ % ^ & * () _ + - = { } | \ [] : " ; < > / , . ?

The following special characters **are not** supported when printed from WebAccess using TABQuik:

~

Examples of the unsupported characters above: ~fusion, test~tabquik

WebAccess and Desktop Import using Microsoft® Excel .xlsx Files

FusionRMS WebAccess requires Microsoft Access Database Engine 2010/2016 Redistributable to be installed on the WebAccess Server to support importing records in batch mode using Microsoft® Excel® .xlsx files.

FusionRMS Desktop requires Microsoft Access Database Engine 2010/2016 Redistributable to be installed on all machines that will be used to import records in batch mode using Microsoft® Excel® .xlsx files.

The redistributable can be downloaded from <https://www.microsoft.com/en-us/download/details.aspx?id=54920>. Please follow the instructions as provided by Microsoft to install this component.

RELEASE NOTES

© 2023 TAB. All Rights Reserved
TAB Corporate Headquarters, 605 Fourth Street, Mayville, WI 53050

4. Discontinued Items and Features

Due to changes in technology, feature approach and capabilities, and/or FusionRMS product roadmap development, the following items and features have been discontinued as of the FusionRMS 11.0 version.

WebAccess Client

- **Attachment Drag & Drop to Row:** Attachments can no longer be added to FusionRMS by dragging and dropping file(s) directly to the data grid. Please note that drag and drop to the Attachments preview window (accessed by clicking the paperclip icon from the grid) is still supported.

Third-Party Tools & Integrations

The following third-party tools and integrations have not been formally tested and approved by TAB for use with FusionRMS 11.0. Any use and/or integration of unsupported technologies with FusionRMS is the sole responsibility of the Client. If TAB's support is requested in relation to an unsupported solution, it will be billed at a rate of \$275 USD per hour, with a minimum half-day charge, and is at the discretion of TAB to support.

Including, but not limited to:

- Citrix Workspace
- MS Office 365
- SQL Server Reporting Services
- SQL Server Database Mail
- Browser extensions such as pop up and ad blockers (ex. Adblock, uBlock Origin, etc.)

RELEASE NOTES

© 2023 TAB. All Rights Reserved
TAB Corporate Headquarters, 605 Fourth Street, Mayville, WI 53050